

Online Supplementary Material

Outcomes for Dostarlimab and Real-World Treatments in Post-platinum Patients With Advanced or Recurrent Endometrial Cancer: The GARNET Trial Versus a US Electronic Health Record–based External Control Arm. *JHEOR*. 2023;10(2):53-61. [doi:10.36469/jheor.2023.77484](https://doi.org/10.36469/jheor.2023.77484)

Table S1: Detailed FIGO Stage at Diagnosis Before Stabilized-IPTW Adjustment

Figure S1: Selection of Patients from the Flatiron Health Endometrial Cancer Analytic Cohort

Figure S2: Unadjusted Overall Survival for the GARNET Trial Cohort versus Real-World Cohort

Figure S3: (A) Log Cumulative Hazard Plot and (B) Schoenfeld Residual Plot for Unadjusted Overall Survival for GARNET Trial Cohort versus Real-World Cohort

Figure S4: (A) Log Cumulative Hazard Plot and (B) Schoenfeld Residual Plot for Stabilized IPTW-Adjusted Overall Survival for GARNET Trial Cohort versus Real-World Cohort

Figure S5: Overall Survival After PSM for the GARNET Trial Cohort versus Real-World Cohort

Figure S6: (A) Log Cumulative Hazard Plot and (B) Schoenfeld Residual Plot for PSM-Adjusted Overall Survival for GARNET Trial Cohort versus Real-World Cohort

Figure S7: Unadjusted Time to Treatment Discontinuation for GARNET Trial Cohort versus Real-World Cohort

Figure S8: Time to Treatment Discontinuation After PSM for GARNET Trial Cohort versus Real-World Cohort

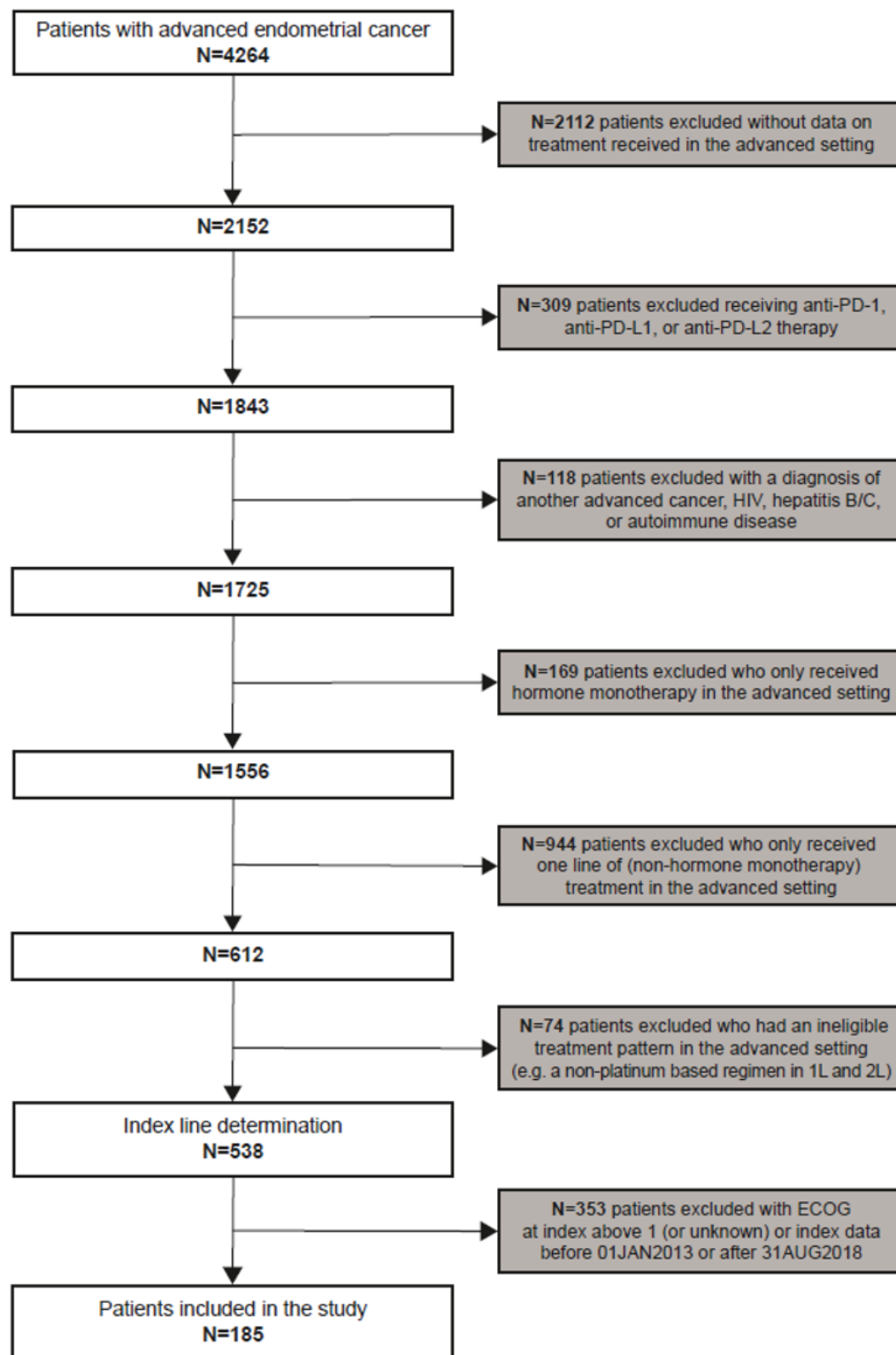
This supplementary material has been provided by the authors to give readers additional information about their work.



Table S1. Detailed FIGO Stage at Diagnosis Before Stabilized-IPTW Adjustment

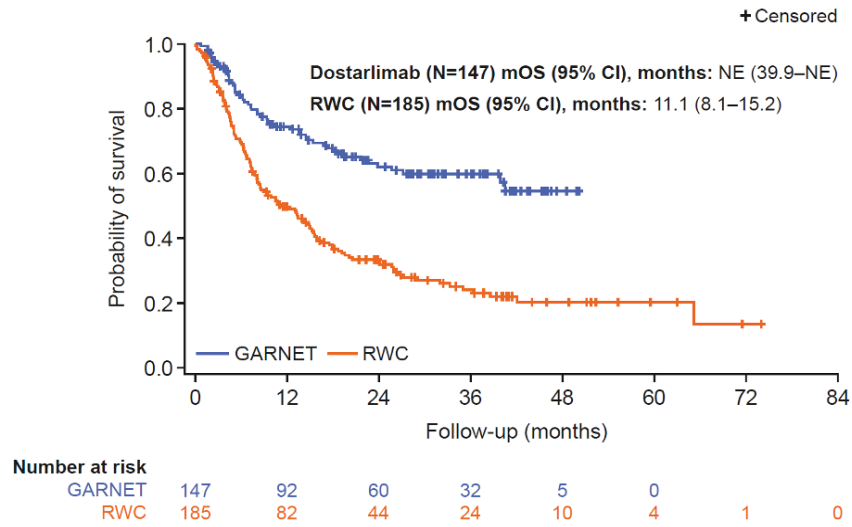
| FIGO Stage at EC Diagnosis | GARNET Trial Cohort (N = 147), n (%) | Real-World Cohort (N = 185), n (%) |
|-----------------------------------|---|---|
| Stage I | 3 (2.0) | 2 (1.1) |
| Stage IA | 23 (15.6) | 27 (14.6) |
| Stage IB | 22 (15.0) | 23 (12.4) |
| Stage IC | 0 (0.0) | 2 (1.1) |
| Stage II | 13 (8.8) | 12 (6.5) |
| Stage III | 4 (2.7) | 1 (0.5) |
| Stage IIIA | 12 (8.2) | 6 (3.2) |
| Stage IIIB | 5 (3.4) | 4 (2.2) |
| Stage IIIC | 9 (6.1) | 18 (9.7) |
| Stage IIIC1 | 10 (6.8) | 0 (0.0) |
| Stage IIIC2 | 15 (10.2) | 0 (0.0) |
| Stage IV | 13 (8.8) | 1 (0.5) |
| Stage IVA | 1 (0.7) | 2 (1.1) |
| Stage IVB | 17 (11.6) | 73 (39.5) |
| Unknown | 0 (0.0) | 14 (7.6) |

Abbreviations: EC, endometrial cancer; FIGO, International Federation of Gynecology and Obstetrics; IPTW, inverse probability of treatment weighting.

Figure S1. Selection of Patients from the Flatiron Health Endometrial Cancer Analytic Cohort

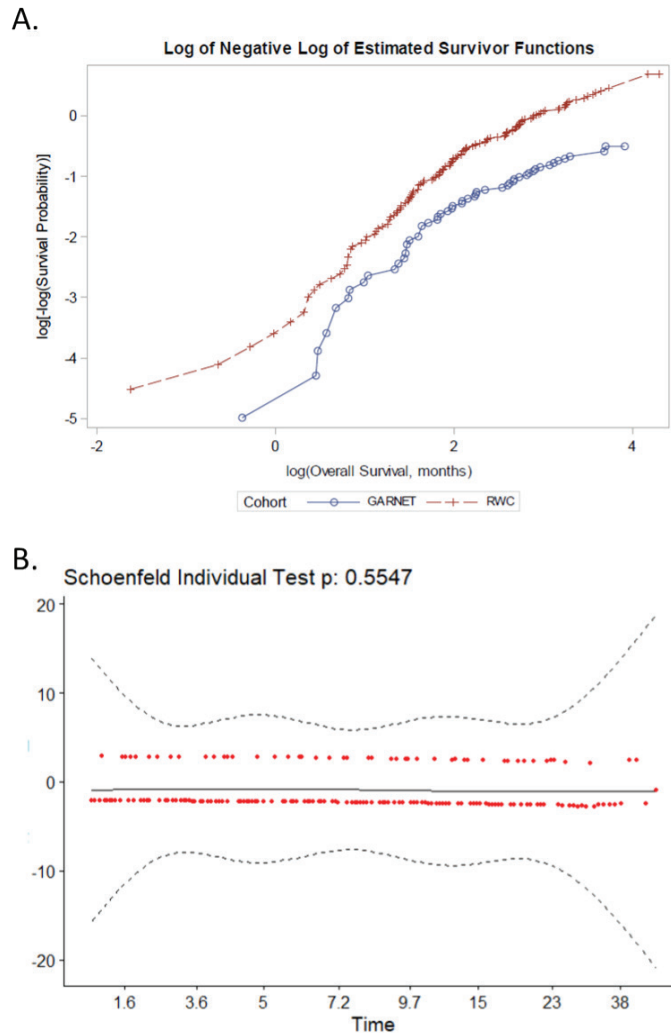
Abbreviations: 1/2L, first-/second-line; ECOG, Eastern Cooperative Oncology Group; PD-(L)1/2, programmed death-(ligand)1/2.

Figure S2. Unadjusted Overall Survival for the GARNET Trial Cohort Versus Real-World Cohort



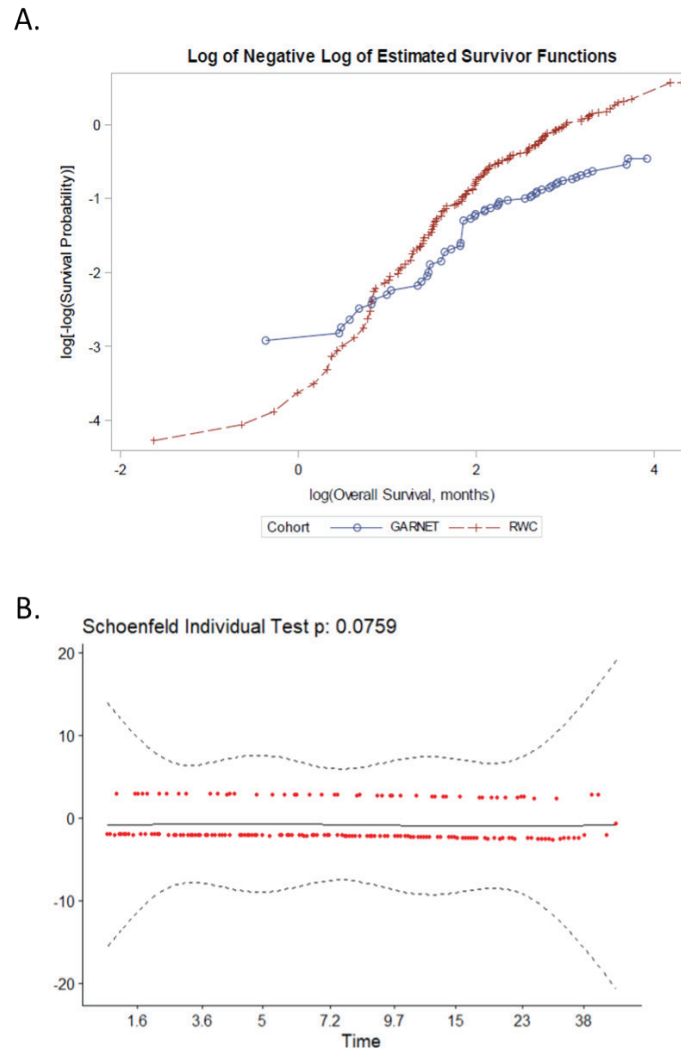
Abbreviations: CI, confidence interval; mOS, median overall survival; NE, not estimable; RWC, real-world cohort.

Figure S3. (A) Log Cumulative Hazard Plot and (B) Schoenfeld Residual Plot for Unadjusted Overall Survival for GARNET Trial Cohort Versus Real-World Cohort



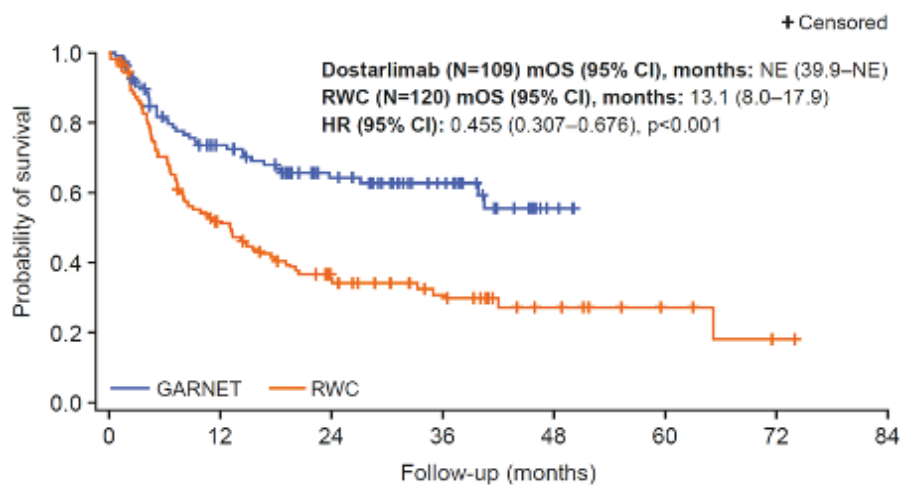
Abbreviation: RWC, real-world cohort.

Figure S4. (A) Log Cumulative Hazard Plot and (B) Schoenfeld Residual Plot for Stabilized-IPTW-Adjusted Overall Survival for GARNET Trial Cohort Versus Real-World Cohort



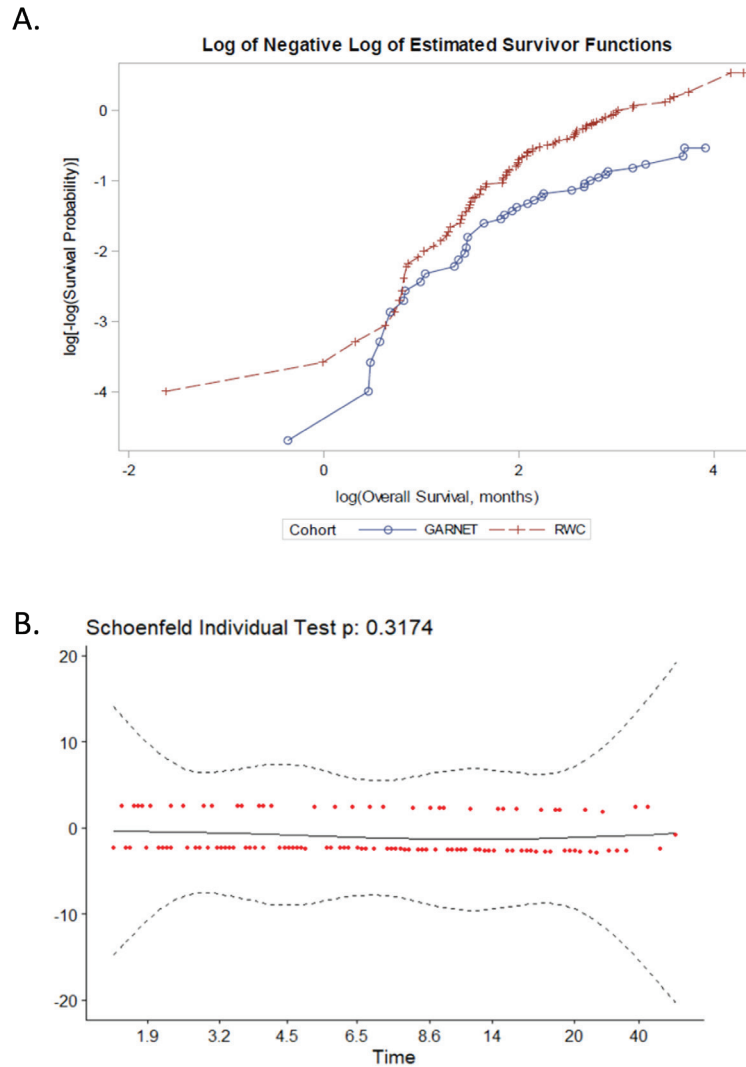
Abbreviations: IPTW, inverse probability of treatment weighting; RWC, real-world cohort.

Figure S5. Overall Survival After PSM for the GARNET Trial Cohort Versus Real-World Cohort



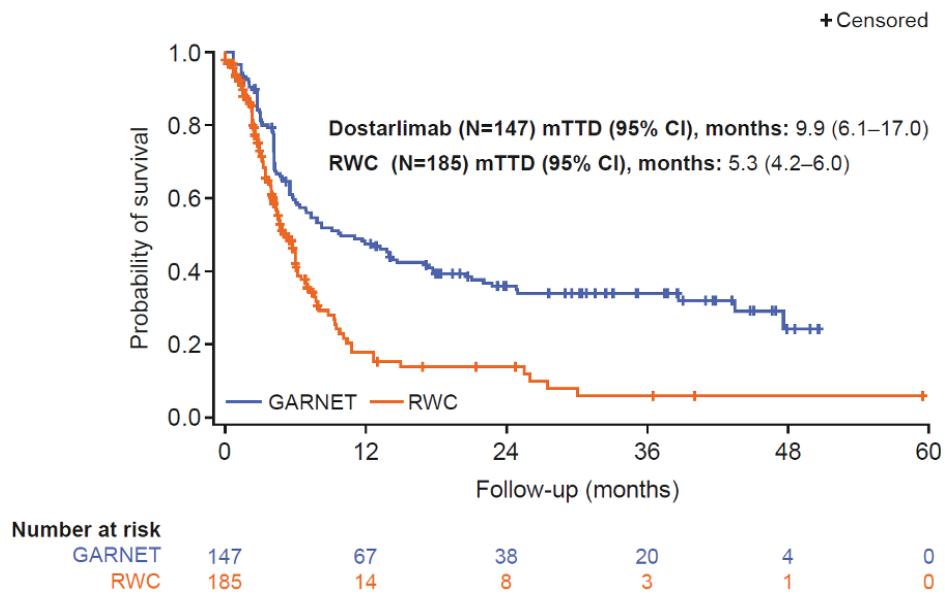
Abbreviations: CI, confidence interval; HR, hazard ratio; mOS, median overall survival; NE, not estimable; PSM, propensity score matching; RWC, real-world cohort.

Figure S6. (A) Log Cumulative Hazard Plot and (B) Schoenfeld Residual Plot for PSM-Adjusted Overall Survival for GARNET Trial Cohort Versus Real-World Cohort



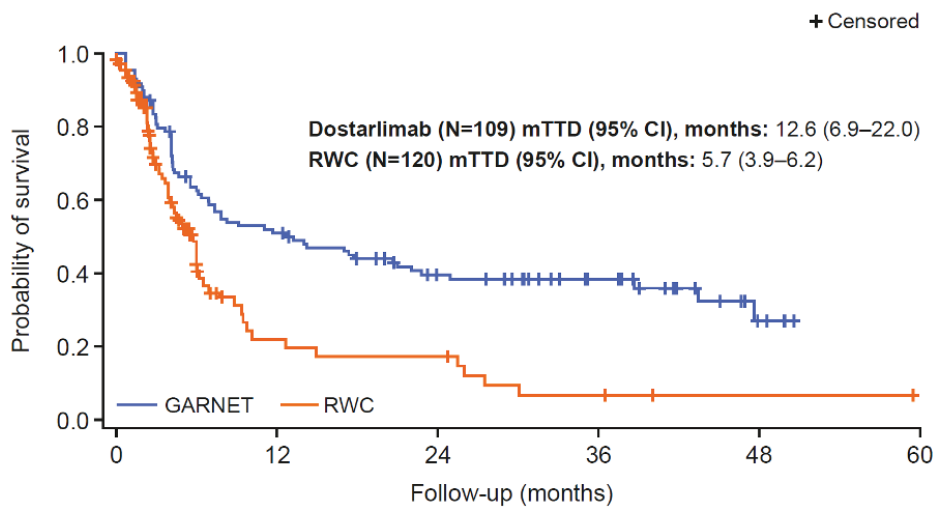
Abbreviations: PSM, propensity score matching; RWC, real-world cohort.

Figure S7. Unadjusted Time to Treatment Discontinuation for GARNET Trial Cohort Versus Real-World Cohort



Abbreviations: CI, confidence interval; mTTD, median time to treatment discontinuation; NE, not estimable; RWC, real-world cohort.

Figure S8. Time to Treatment Discontinuation After PSM for GARNET Trial Cohort Versus Real-World Cohort



Abbreviations: CI, confidence interval; mTTD, median time to treatment discontinuation; NE, not estimable; PSM, propensity score matching; RWC, real-world cohort.