

Online Supplementary Material

Chronic Myeloid Leukemia: Part II—Cost of Care Among Patients in Advanced Phases or Later Lines of Therapy in Chronic Phase in the United States from a Commercial Perspective. *JHEOR*. 2022;9(2):30-36. [doi:10.36469/jheor.2022.36976](https://doi.org/10.36469/jheor.2022.36976)

Table S1: List of AML-like or ALL-like Chemotherapies

Figure S1: Sample Selection for the CML-CP On Treatment and CML-CP Post-discontinuation Cohorts

Figure S2: Proportion of Patients by Line of Therapy (2001-2019)

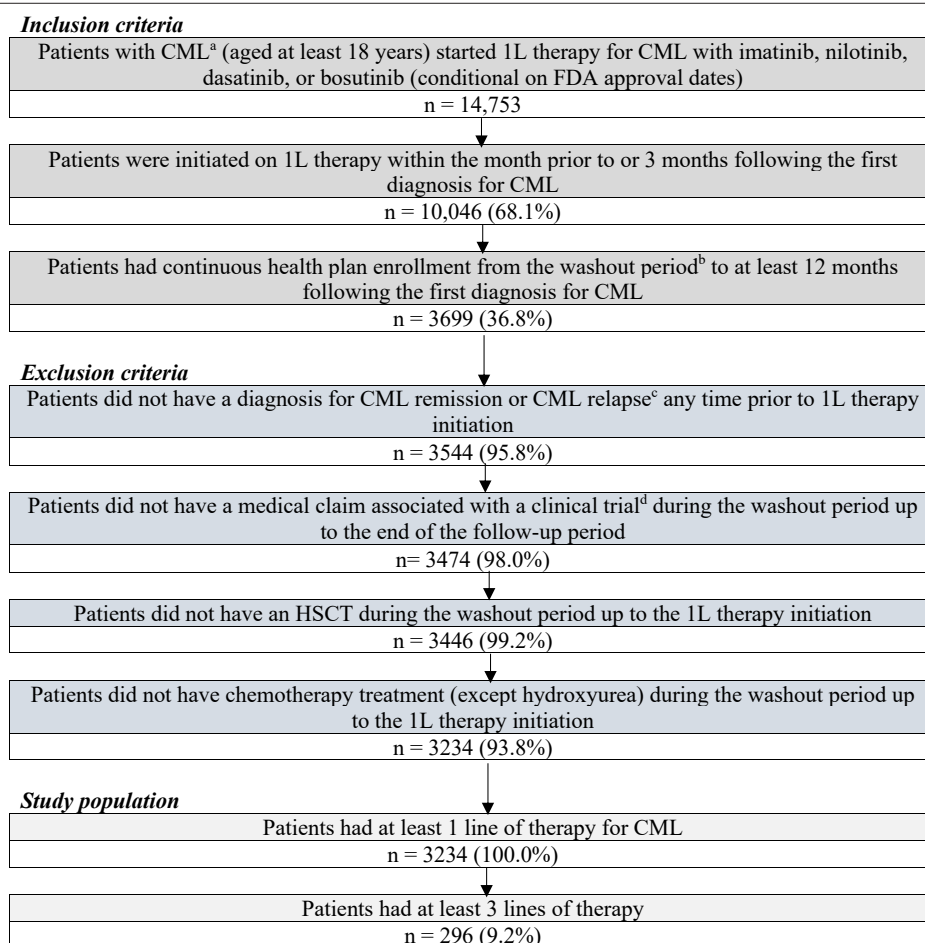
This supplementary material has been provided by the authors to give readers additional information about their work.



Table S1. List of AML-like or ALL-like Chemotherapies

Azacitidine
Blinatumomab
Cyclophosphamide
Cytarabine
Daunorubicin
Decitabine
Doxorubicin
Gemtuzumab
Idarubicin
Inotuzumab
Mercaptopurine
Methotrexate
Pegaspargase
Vincristine

Abbreviations: ALL, acute lymphocytic leukemia; AML, acute myeloid leukemia.

Figure S1. Sample Selection for the CML-CP On Treatment and CML-CP Post-discontinuation Cohorts

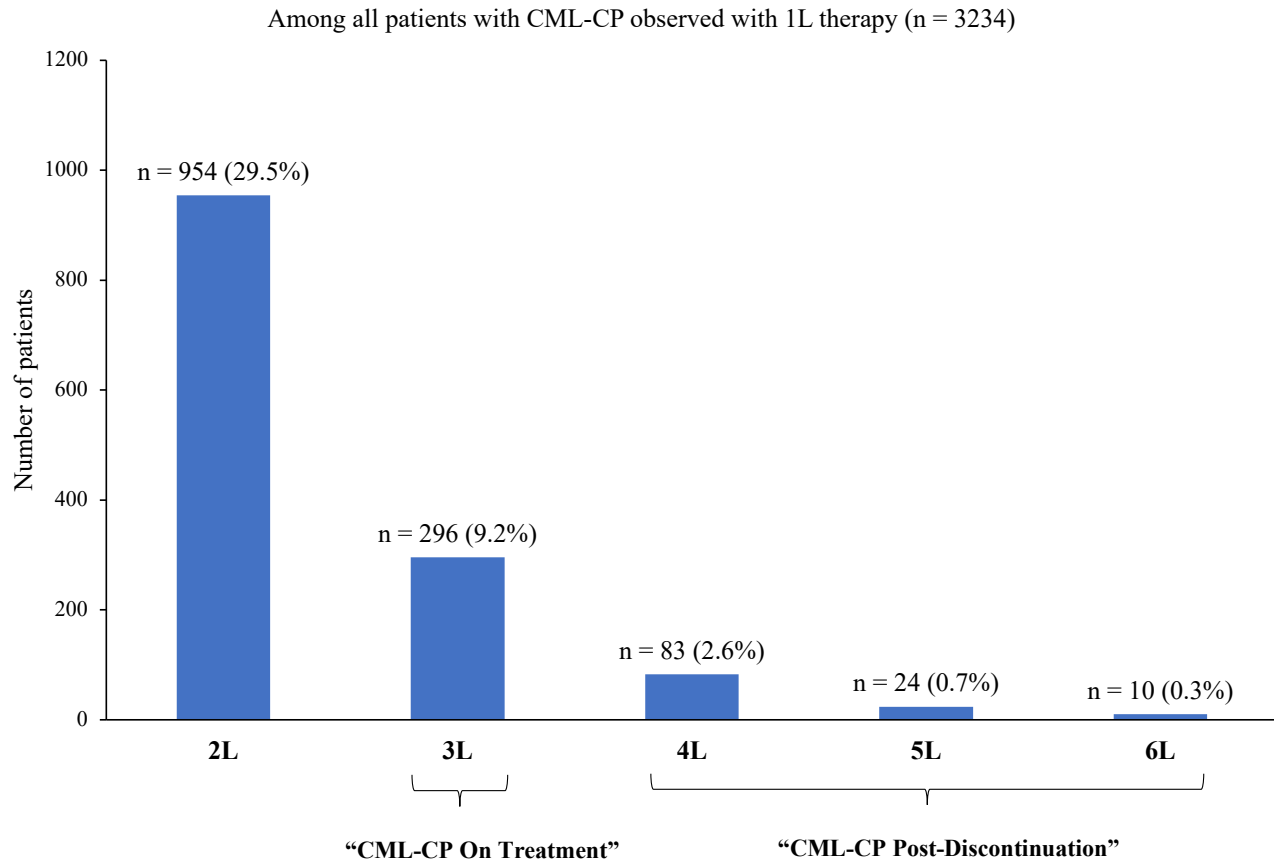
Abbreviations: 1L, first-line; 3L, third-line; CML-CP, chronic myeloid leukemia in chronic phase; FDA, Food and Drug Administration; HSCT, hematopoietic stem cell transplant; Ph+, Philadelphia chromosome-positive

^aPatients had at least 1 diagnosis for CML (ICD-9-CM code 205.1x, ICD-10-CM code C92.1x), with first CML diagnosis observed in claims on or after May 10, 2001, the date of FDA approval for imatinib.

^bThe washout period was defined as a period of at least 6 months prior to 1L therapy initiation for CML.

^cCML remission was defined using ICD-9-CM code 205.11 or ICD-10-CM code C92.11, and CML relapse was defined using ICD-9-CM code 205.12 or ICD-10-CM code C92.12.

Figure S2. Proportion of Patients by Line of Therapy (2001-2019)



Abbreviation: CML-CP, chronic myeloid leukemia–chronic phase.