

Online Supplementary Material

Size and Treatment Outcomes of HR+, HER2- Early Breast Cancer Population With High Risk of Recurrence: A Real-World Cohort Study With Danish Breast Cancer Cooperative Group Registry Data. *JHEOR*. 2025;12(1):252-260. [doi:10.36469/jheor.2025.137277](https://doi.org/10.36469/jheor.2025.137277)

Table S1: Cohort Attrition and Subgroup Flow

Figure S1: Multivariate Cox Model Results (Hazard Ratio [CI]) of Factors Associated With Invasive Disease-Free Survival in the High-Risk Patient Group

Figure S2: Multivariate Cox Model Results (Hazard Ratio [CI]) of Factors Associated With Distant Recurrence-Free Survival in the High-Risk Patient Group

Figure S3: Multivariate Cox Model Results (Hazard Ratio [CI]) of Factors Associated With Overall Survival in the High-Risk Patient Group

This supplementary material has been provided by the authors to give readers additional information about their work.



Table S1. Cohort Attrition and Subgroup Flow

| Level | Population | N | Notes |
|-----------|---|--------|---|
| 0 | Base population | 51 165 | BC diagnosis in DBCG, Jan. 1, 2010–Dec. 31, 2019 |
| 1 | Study cohort | 33 631 | All inclusion and exclusion criteria applied (see Methods) |
| 1.1 | EBC (stage IA–IIIC) | 30 482 | Excluded 3149 (from 33 631) with TNM 0 or unknown. |
| 1.1.1 | HR+, HER2– EBC | 23 813 | Excluded 6669 (from 30 482) with HR– or HER2+ or either with unknown status (n = 583) |
| 1.1.1.1 | HR+, HER2–, node positive EBC (stage IB–IIIC) | 8406 | Excluded 15 407 (from 23 813) with node negative or unknown status (n = 332) |
| 1.1.1.1.1 | High-risk | 3098 | As defined in Methods |
| 1.1.1.1.2 | Low/moderate risk | 5308 | As defined in Methods |
| 1.1.2 | TNBC | 2520 | Excluded 27 962 (from 30 482) with HR+ or HER2+ or either with unknown status (n = 583) |

Abbreviations: DBCG, Danish Breast Cancer Cooperative Group; EBC, early breast cancer; HER2, human epidermal growth factor; HR, hormone receptor; TNBC, triple-negative breast cancer.

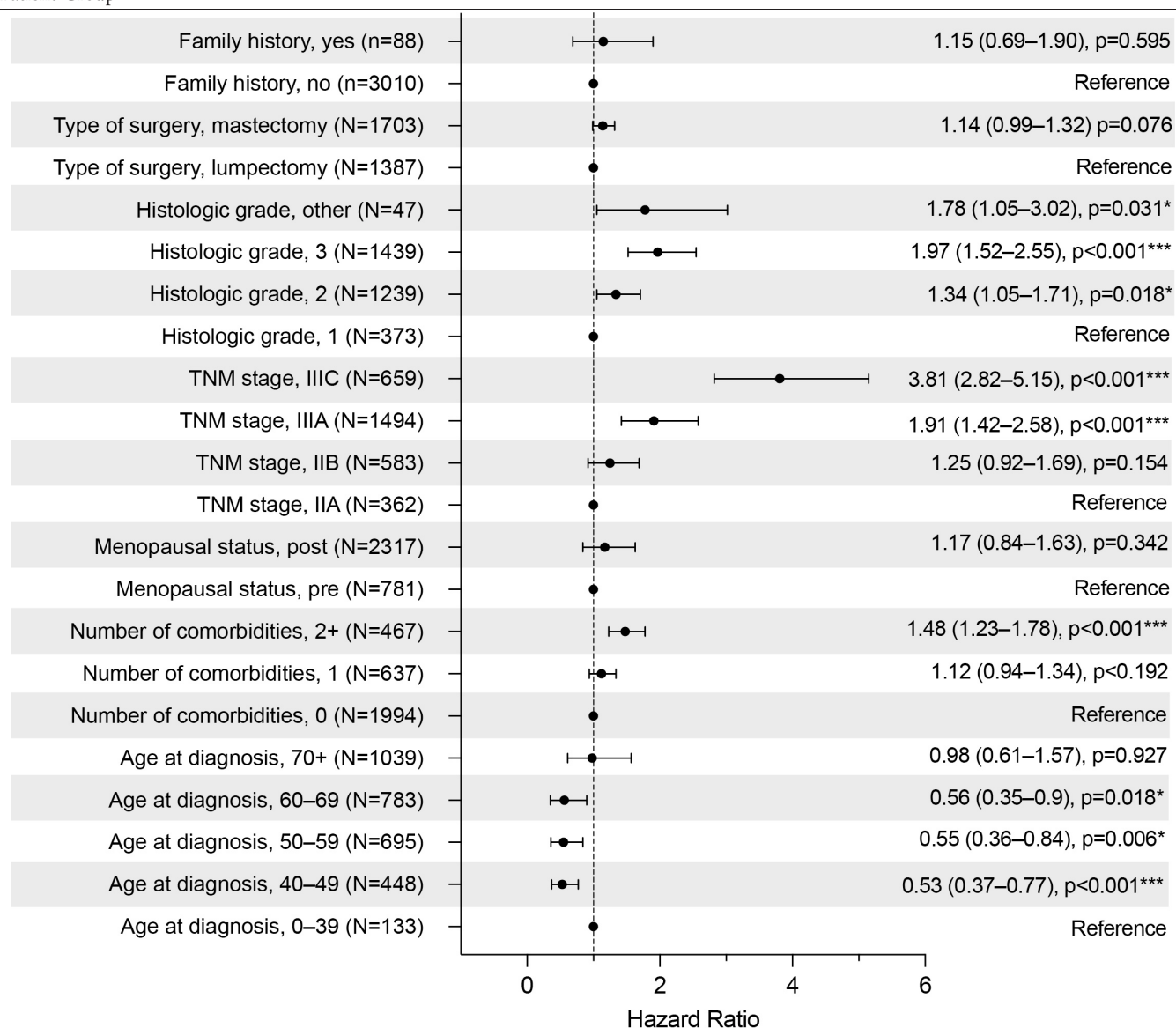
Figure S1. Multivariate Cox Model Results (Hazard Ratio [CI]) of Factors Associated With Invasive Disease-Free Survival in the High-Risk Patient Group

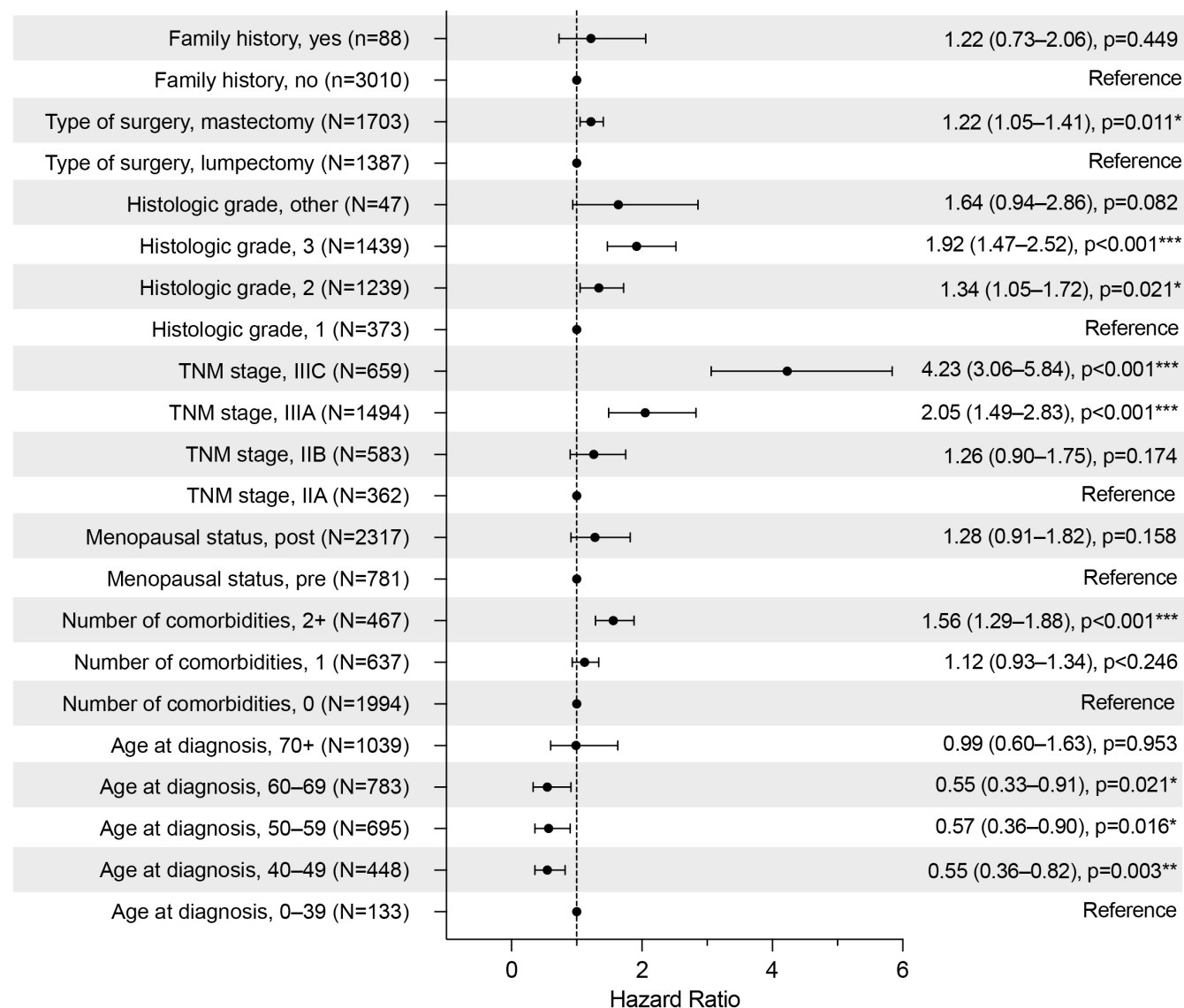
Figure S2. Multivariate Cox Model Results (Hazard Ratio [CI]) of Factors Associated With Distant Recurrence-Free Survival in the High-Risk Patient Group

Figure S3. Multivariate Cox Model Results (Hazard Ratio [CI]) of Factors Associated With Overall Survival in the High-Risk Patient Group